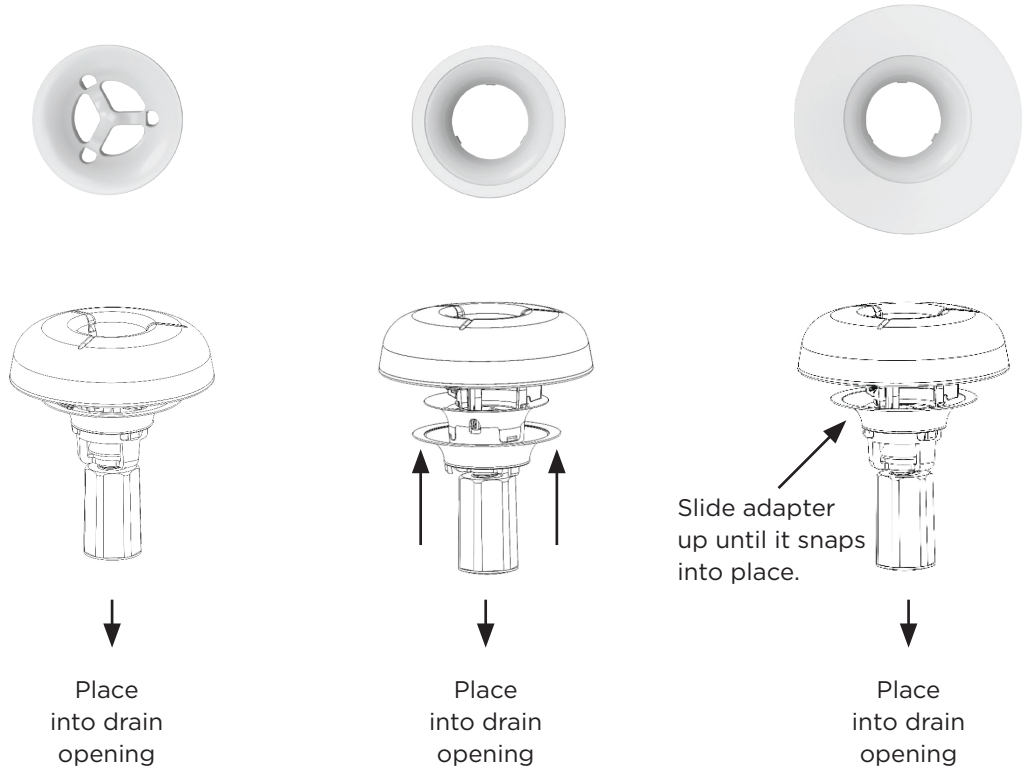


# INSTALLATION INSTRUCTIONS RETROFIT CARTRIDGE

Cartridge as it comes out of the box fits most drain openings.

Intuitive system of snap on caps to accommodate different drain sizes.



**Transparent Key-Ring Enzyme Cavity:**

The key-ring cavity allows a clear view of the enzyme filling, and indicates when the cartridge needs to be replaced.

**Service When The Blue Is Gone!**



New



Time to Change

Read these instructions completely and carefully

## TROUBLESHOOTING GUIDE

PROBLEM	CAUSE	SOLUTION
Constant blinking red LED when user NOT present.	<ul style="list-style-type: none"> <li>Batteries need replacing.</li> </ul>	<ul style="list-style-type: none"> <li>Replace batteries. See <b>STEP 6</b> "Battery Replacement."</li> </ul>
Not enough water to fixture or too much water to fixture.	<ul style="list-style-type: none"> <li>Diaphragm damaged.</li> <li>Valve control stop improperly adjusted.</li> </ul>	<ul style="list-style-type: none"> <li>Replace diaphragm.</li> <li>Adjust valve control stop.</li> </ul>
Valve will not operate.	<ul style="list-style-type: none"> <li>Batteries are drained.</li> <li>Water supply is turned off.</li> <li>Relief valve (diaphragm plunger) is damaged.</li> </ul>	<ul style="list-style-type: none"> <li>Replace batteries.</li> <li>Turn water on.</li> <li>Replace relief valve (diaphragm plunger).</li> <li>If the unit does not begin to function, call customer service.</li> </ul>
Valve does not shut off.	<ul style="list-style-type: none"> <li>Dirt or debris preventing diaphragm from functioning properly.</li> </ul>	<ul style="list-style-type: none"> <li>Remove dirt or debris on diaphragm.</li> <li>Replace diaphragm.</li> </ul>
Valve does not flush even after sensor has been adjusted.	<ul style="list-style-type: none"> <li>Batteries are drained.</li> </ul>	<ul style="list-style-type: none"> <li>Replace batteries.</li> <li>If the unit does not begin to function, call customer service.</li> </ul>

## WARRANTY

The hybrid flush system is warranted to be free of defects in material and workmanship for a period of five (5) years from date of purchase, when properly installed and under normal use and service. These provisions do not include the batteries shipped with the products. A defective product may be returned within five (5) years from date of purchase with the proper invoice of purchase.