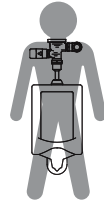


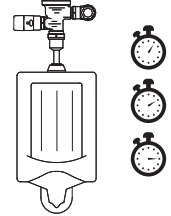
User Approaches



Urinal Used



User Leaves



Urinal flushes on programmed timed intervals

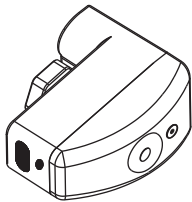
The **FHCS-KIT Conversion Kit** is a fully programmable automatic flush control device for urinals with Falcon Water Technologies Retrofit Cartridge. The smart design allows the device to be programmed by controlling the frequency of flushes in **TIMER** controlled mode.

When in **TIMER** controlled mode, the unit converts most urinals into water efficient fixtures by controlling the amount of daily flushes. The flush intervals can be programmed to flush once every 30 minutes, 1, 2, or 3 hours. The unit will go to **"SLEEP"** if a user is **NOT** detected within 135 minutes since the last use to prevent flush activation while the facility is closed. A mechanical manual flush override using the provided **MANUAL FLUSH KEY** will allow the custodial staff (not the user) to flush the unit manually at any time (**Note:** Electronic push button is deactivated in **TIMER** mode). It is recommended that a .125 gpf diaphragm be used with the flushometer to achieve maximum water savings and efficiencies.

### STEP 1 COMPONENTS



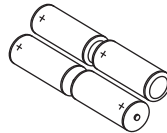
Collar Gasket



Unit



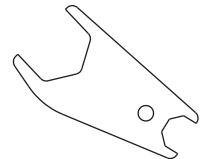
Manual Flush Key



Four (4) "C" Cell Alkaline Batteries



Battery Compartment Wrench



Collar Wrench

### STEP 2 INSTALLATION

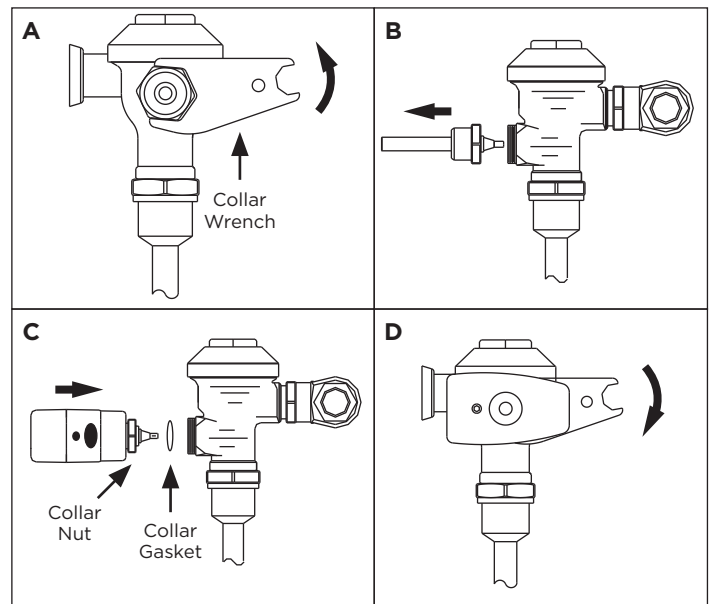
**Pre-Installation Note:** Although not necessary, it is recommended to shut off water supply at stop.

- A. Using the supplied collar wrench, loosen handle from flush valve.
- B. Remove handle from flush valve.

**Note:** A small amount of water may drip out while removing handle so be prepared to collect it with a rag or towel.

- C. Place collar gasket into collar nut and attach the **FHCS-KIT Conversion Kit** unit where the handle was removed.
- D. Tighten collar nut using the supplied collar wrench.

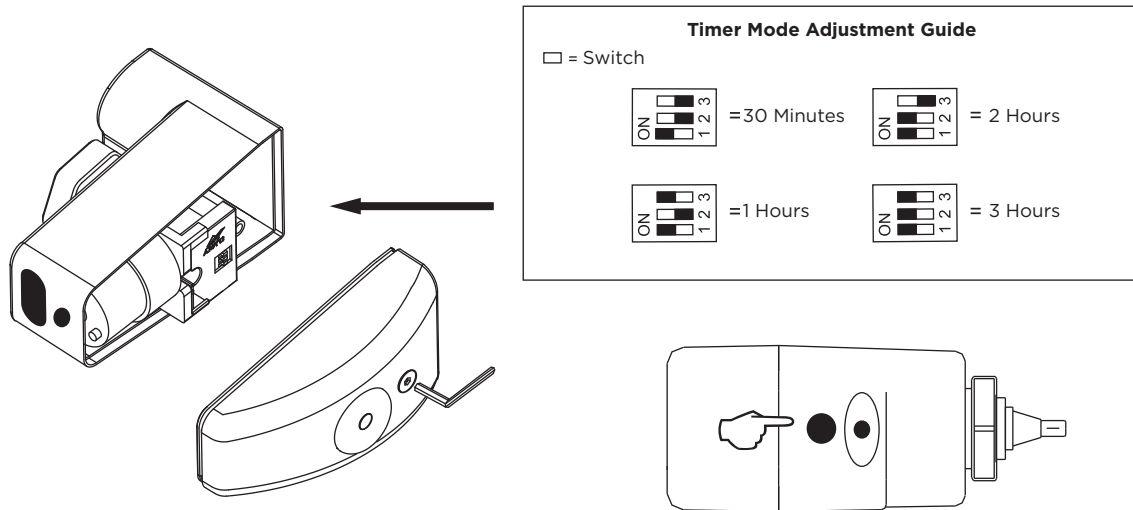
**Note:** Save removed handle in case you need to reuse for service of **FHCS-KIT Conversion Kit** unit.



## STEP 3 ADJUSTING MODES OF OPERATION

The unit is preset to **TIMER** mode to flush once every 2 hours. Remove side cover using battery compartment wrench and refer to the “Mode Adjustment Guide” for switch settings. See diagrams below.

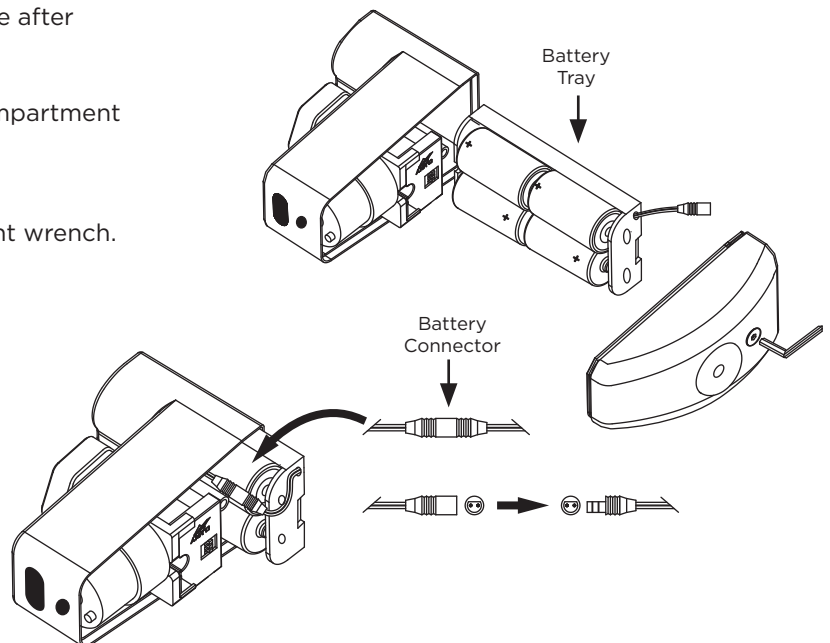
In **TIMER** mode, the unit converts most urinals into water efficient fixtures by controlling the amount of daily flushes. The flush intervals can be programmed to flush once every 30 minutes, 1, 2, or 3 hours. The unit will go to “**SLEEP**” if a user is **NOT** detected within 135 minutes since the last use to prevent flush activation while the facility is closed. A mechanical manual flush override using the provided **MANUAL FLUSH KEY** will allow the custodial staff (not the user) to flush the unit manually at any time. **Note:** Electronic push button is deactivated in **TIMER** mode.



## STEP 4 ACTIVATION

**Note:** Four (4) “C” Cell batteries are factory installed inside the unit. The unit is shipped from factory with the battery tray unplugged and must be plugged in to activate after desired flush mode is set.

- Remove side cover using supplied battery compartment wrench.
- Plug in battery connector. Unit will flush once.
- Reinstall side cover using battery compartment wrench.



## STEP 5 MODE OPERATION AND FEATURES

### TIMER Mode (For Urinal Use Only)

- A. Select switch sequence for preferred time interval.
- B. Plug in battery connector (unit will flush once). Interval program will begin counting.
- C. Unit is now activated.
- D. Re-install battery cover.
- E. The electronic push button on the front of the unit is deactivated in **TIMER** mode.
- F. The unit will only flush at the set time interval.
- G. If a user is not detected within 135 minutes (2 Hours, 15 Minutes) of last use, the unit will go to **"SLEEP"**.
- H. When the unit goes to **"SLEEP"** it will flush once and discontinue counting the flush interval. The unit will stay dormant until the next user is sensed. Once a user is sensed the unit will **"WAKE UP"**.
- I. Once the unit **"WAKES UP"** it will flush once, reset the time interval, and resume counting.

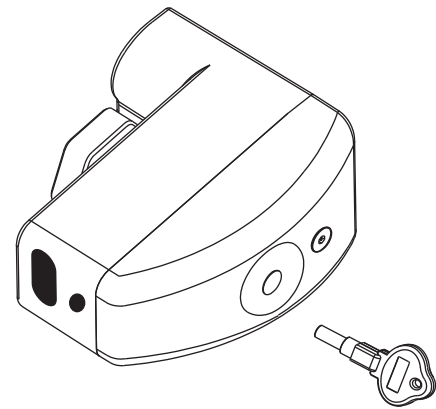
The **"SLEEP"** feature is designed so that the unit does not flush after business hours and/or weekends if facility is closed and to allow for maximum water conservation.

The unit includes a mechanical manual flush override.

To activate the mechanical manual flush override, simply insert the **MANUAL FLUSH KEY** (included) into the slot located on the side of the unit and press until flush is activated.

**Suggestion:** The **MANUAL FLUSH KEY** can be used to initiate a manual flush at any time. The key should be kept in a safe place or be attached to key chain of custodial staff for easy access.

**Note:** Activating mechanical manual flush override does not affect the time interval setting.

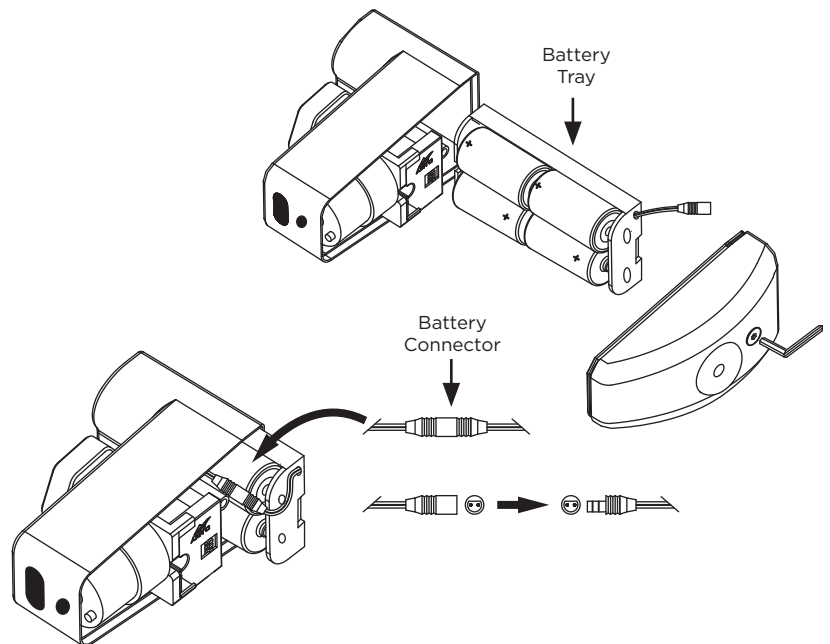


## STEP 6 BATTERY REPLACEMENT

**Note:** When batteries are low you will see a constant blinking red LED when user is not present.

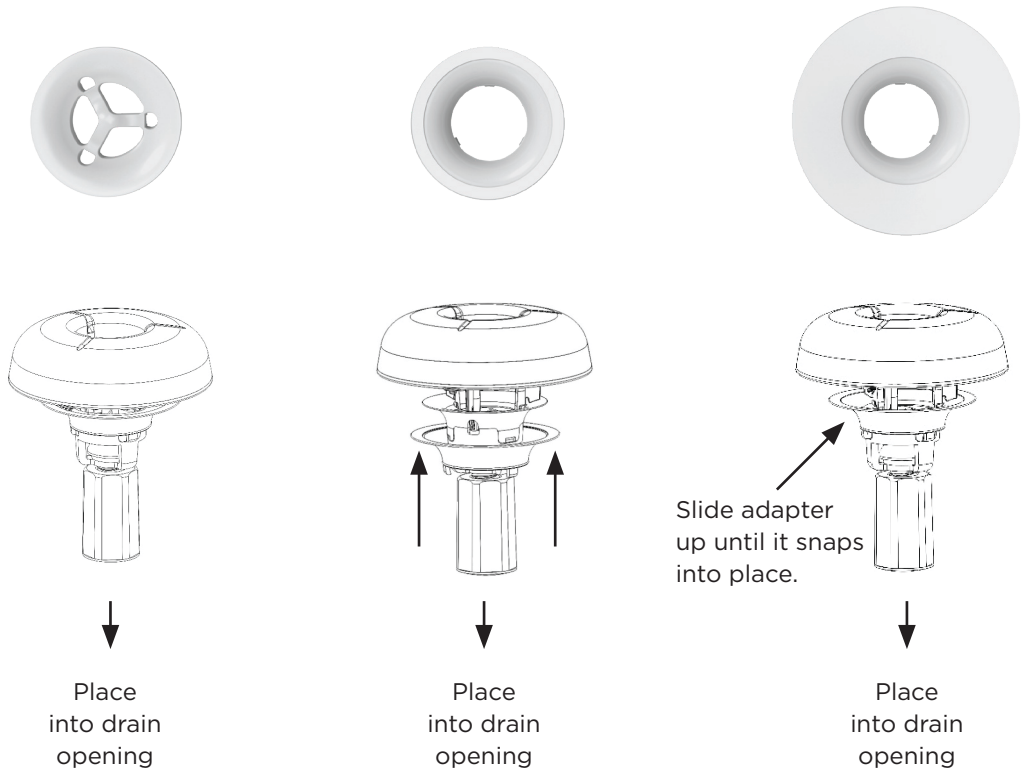
To replace batteries:

- A. Remove side cover using supplied battery compartment wrench.
- B. Unplug battery connector and slide out battery tray.
- C. Remove old batteries from tray and load new batteries. Note the position of batteries in tray.
- D. Reinstall battery tray into unit and plug in battery connector.
- E. Reinstall side cover using battery compartment wrench.



Cartridge as it comes out of the box fits most drain openings.

Intuitive system of snap on caps to accommodate different drain sizes.



**Transparent Key-Ring Enzyme Cavity:**

The key-ring cavity allows a clear view of the enzyme filling, and indicates when the cartridge needs to be replaced.

**Service When The Blue Is Gone!**



Read these instructions completely and carefully

## TROUBLESHOOTING GUIDE

PROBLEM	CAUSE	SOLUTION
<b>Constant blinking red LED when user NOT present.</b>	<ul style="list-style-type: none"> <li>Batteries need replacing.</li> </ul>	<ul style="list-style-type: none"> <li>Replace batteries. See <b>STEP 6</b> "Battery Replacement."</li> </ul>
<b>Not enough water to fixture or too much water to fixture.</b>	<ul style="list-style-type: none"> <li>Diaphragm damaged.</li> <li>Valve control stop improperly adjusted.</li> </ul>	<ul style="list-style-type: none"> <li>Replace diaphragm.</li> <li>Adjust valve control stop.</li> </ul>
<b>Valve will not operate.</b>	<ul style="list-style-type: none"> <li>Batteries are drained.</li> <li>Water supply is turned off.</li> <li>Relief valve (diaphragm plunger) is damaged.</li> </ul>	<ul style="list-style-type: none"> <li>Replace batteries.</li> <li>Turn water on.</li> <li>Replace relief valve (diaphragm plunger).</li> <li>If the unit does not begin to function, call customer service.</li> </ul>
<b>Valve does not shut off.</b>	<ul style="list-style-type: none"> <li>Dirt or debris preventing diaphragm from functioning properly.</li> </ul>	<ul style="list-style-type: none"> <li>Remove dirt or debris on diaphragm.</li> <li>Replace diaphragm.</li> </ul>
<b>Valve does not flush even after sensor has been adjusted.</b>	<ul style="list-style-type: none"> <li>Batteries are drained.</li> </ul>	<ul style="list-style-type: none"> <li>Replace batteries.</li> <li>If the unit does not begin to function, call customer service.</li> </ul>

## WARRANTY

The hybrid flush system is warranted to be free of defects in material and workmanship for a period of five (5) years from date of purchase, when properly installed and under normal use and service. These provisions do not include the batteries shipped with the products. A defective product may be returned within five (5) years from date of purchase with the proper invoice of purchase.

