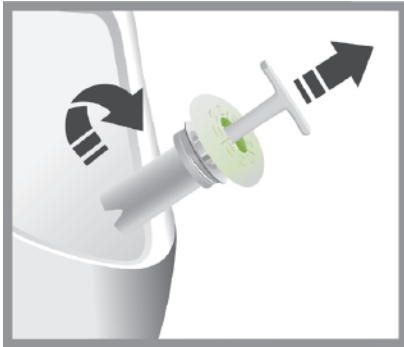
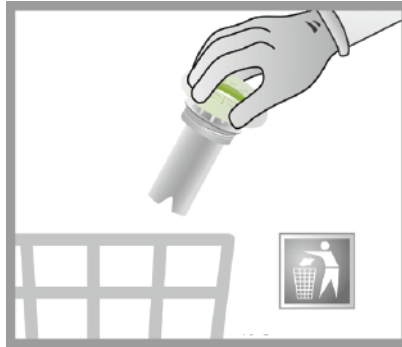


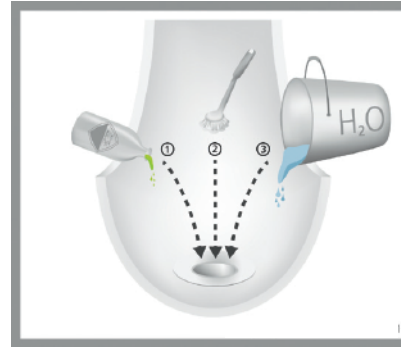
High Performance Key-Valve® Replacement



Place the Service- Key into the High Performance Key-Valve (HPKV) and turn counter clockwise to unscrew the HPKV from the Key-Adapter

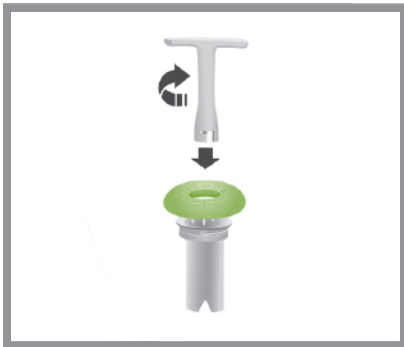


Dispose of the HPKV cartridge in any normal waste bin.

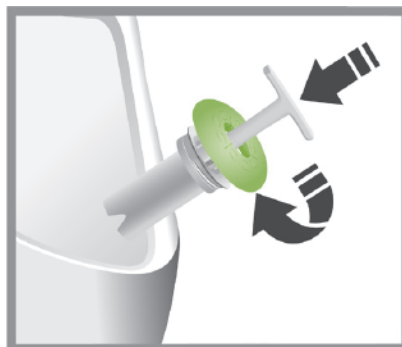


Flush the urinal with a bucket of water container cleaner, scrub thoroughly with a brush and then flush with a bucket of water containing cleaner again.

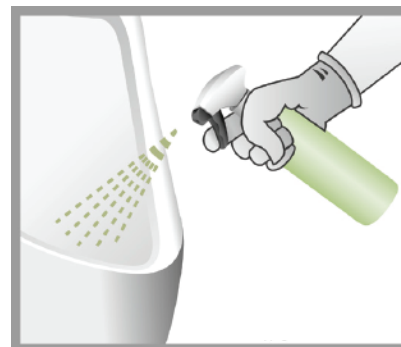
NOTE: For this cleaning use a concentrated acid cleaner.



Remove HPKV from packaging and, with a slight counter clockwise twist, plug they Service-Key into the new HPKV cartridge.



Using the Service-Key, screw the HPKV clockwise into the Key-Adapter until the valve sits evenly.



Activate the new HPKV by flushing about 5 liters of soapy water. Spray urinal with pH neutral cleaner*. Do NOT wipe afterwards.

WHEN TO CHANGE THE HPKV

As soon as the green Key-Ring is empty, the HPKV needs to be replaced. This occurs after approximately 7,500 uses.

ONGOING URINAL CLEANING

Caution When performing ongoing cleaning and urinal bowl maintenance, Do not use harsh cleaners (such as Chlorine or bleaches) or solvent based cleaning agents (such as acids or alkalines).

* Use a mild surfactant based pH neutral cleaner (0-15% anionic and/or non-ionic surfactants). Uncritical additives include enzymes, perfume, oils, dyes, inhibitors, etc.

ATTENTION

This valve has been designed and tested to operate only as manufactured. Under no circumstances should the valve be altered in any way.